



Owner Handbook

CK9
Morris Minor



Introduction

Thank you for buying this CK 9 lever arm to telescopic damper conversion kit. Your kit is Epoxy Powder Coated and Dyno tested to the strictest TÜV standards. The dampers are Krypton Gas filled to give stunning high speed performance and better quality low speed ride.

Safety First

- If working under or on a lifted vehicle, ensure that it is safely supported.
- If compressing a spring, ensure that the correct tools are used. Failure to do this can result in serious or fatal injury.
- SPAX dampers are gas pressurised. Never puncture, dismantle or incinerate.
- The literature contained with this suspension kit is meant as a guide only and is not comprehensive. SPAX Performance Ltd accepts no liability whatsoever for damage, loss or injury incurred as a result of using this literature.

Fitting Notes

- SPAX recommends that this kit be fitted by a suspension specialist.
- Never grip or hit the damper piston rod. This will damage the highly polished surface, leading to premature damper failure
- Never use an impact wrench to tighten nuts and bolts.
- Never force the damper adjusters. Forcing them will cause damage.

Kit Contents

- 2 G736 Dampers
- 2 Upper brackets (handed)
- 2 Upper backing plates
- 2 Lower brackets
- 2 Lower backing plates
- 4 17mm x 34mm Washers
- 4 13mm x 28mm Washers
- 4 M12 x 1.5 Nyloc nuts
- 4 1/4"UNFx2" Bolts with Nyloc nuts
- 2 3/8"UNFx1 1/2" Bolts with Nyloc nuts
- 4 3/8"UNFx1" Bolts with Nyloc nuts
- 4 3/8"UNFx3/4" Bolts with Nyloc nuts



Fitting Instructions

1. The front lever arm acts as the upper wishbone and is therefore retained but with the valving removed. The unit should first be inspected for wear and replaced if necessary.
2. Fit the lower bracket to the rear facing side of the suspension arm with the nuts, bolts and backing plate supplied as shown in the diagram.
3. The diagram shows the positioning of the upper bracket when fitted to original inner wings. If the vehicle has had the inner wings replaced the bracket should be located so that at full droop the distance between the fixing pins is equal to or less than the open length of the damper, and at full bump the distance should be equal to or more than the closed length of the damper.
4. With the position determined mark and drill the four holes and fit the bracket using the nuts, bolts and backing plate supplied.
5. Finally fit the SPAX damper using the washers and nut supplied.
6. Periodically all fixing bolts should be checked for tightness.

Setting Up

Your CK kit is adjustable for damping force. Adjustments can be made without any dismantling of components, making it simpler, faster and easier to obtain your ultimate set-up.

- All Krypton Gas dampers have 28 stages of adjustment. This allows a wide range of adjustment to suit different driving styles and road conditions.
- The dampers are adjustable in rebound and in bump.
- To obtain the ideal set up for you and your car, we recommend initially setting the dampers to 4 clicks up from fully soft (anti-clockwise).
- Then adjust up in 4 click steps. Every time the driving sensation improves, carry on adjusting up by 4 clicks. When the driving sensation deteriorates adjust back one click at a time until you find your perfect setting.

Use

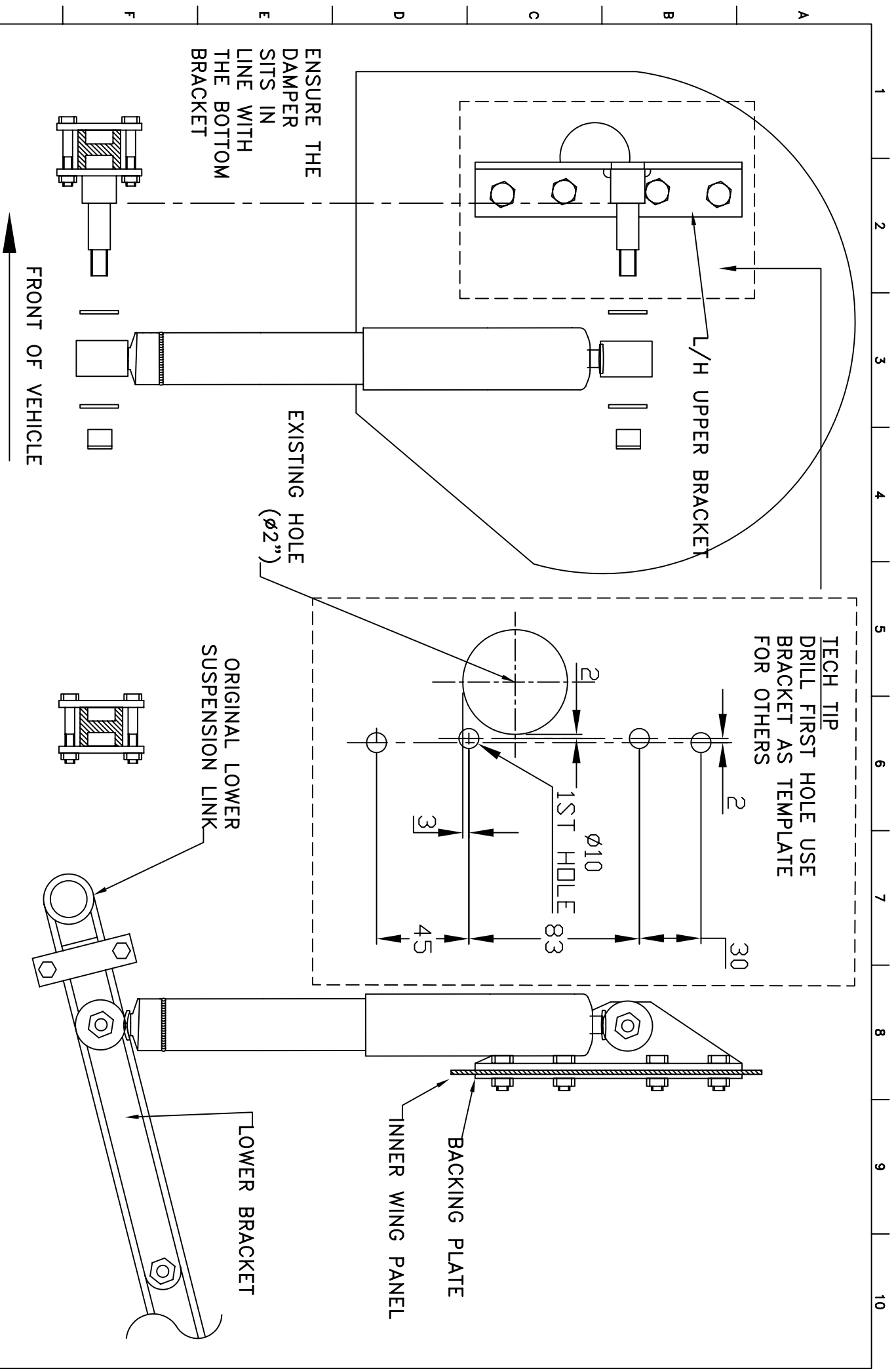
SPAX performance suspension is designed to improve the safety and performance your car.

This suspension kit has been designed for road use and for limited track day use.


Maintenance

Clean components using mild detergent and water. Never use abrasive products. Long-term exposure to corrosive conditions (e.g. salt, acids) or driving in sandy or dusty conditions will reduce the life span of the components.

The damper adjuster mechanism should be adjusted regularly and lubricated with a waxy corrosion inhibitor to prolong the life of the components.



This drawing is the property of SPAX Ltd. and is loaned on the condition that it is not reproduced, copied or otherwise made use of in any form whatsoever, except directly for the benefit of SPAX Ltd., and the acceptance of this drawing will be construed as an agreement to the foregoing conditions.

APPROVED		TOL.		LINEAR $\pm 0.1\text{mm}$ ANGULAR $\pm 0.25^\circ$		CK9 ASSEMBLY DRAWING					
C. JONES		MATERIAL		*****							
DATE		24.10.05		FINISH		*****		DIMS.		mm	
								3rd ANGLE PROJECTION		DRG. CK9	

REV.	DATE	CHANGE	1	2	3	4	5	6	7	8	9	10
------	------	--------	---	---	---	---	---	---	---	---	---	----

What makes SPAX special?

TüV Certification of the Company & Products - The toughest quality standard in Europe

POWDER COATING to give looks and protection that are second to none

DYNO TESTING of each and every damper so you get maximum performance and quality - guaranteed

GAS DAMPERS - Krypton pressurised for stunning high speed performance and superior low speed ride

Everything Adjustable on car, with no dismantling

