



# Front Air Dam Installation Instructions

For Miatas 1990-97

PART # 900-969

MOSS MOTORS, LTD.

440 Rutherford St. P.O. Box 847 Goleta, CA 93116  
1-800-235-6954 • FAX 805-692-2525 • www.miatamania.com

## Tools Required:

10mm socket, 8mm socket, 10mm wrench,  
Philips screwdriver, drill and 6.5mm or 1/4" bit

1. Remove 2 bolts at outside rear end of fascia, which retain the support rods.

**Illustration 1**

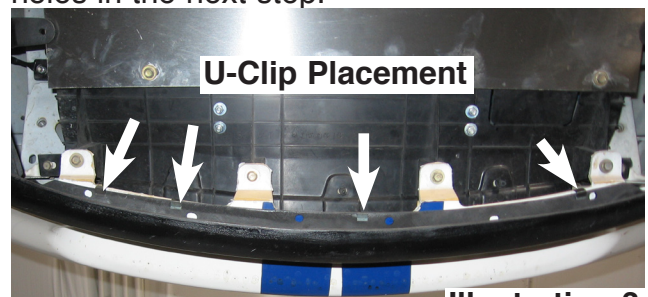


2. Attach the airdam to the fascia with 2 new bolts (A) by threading them through both pieces and into the support rod captive nuts at each end of the fascia.

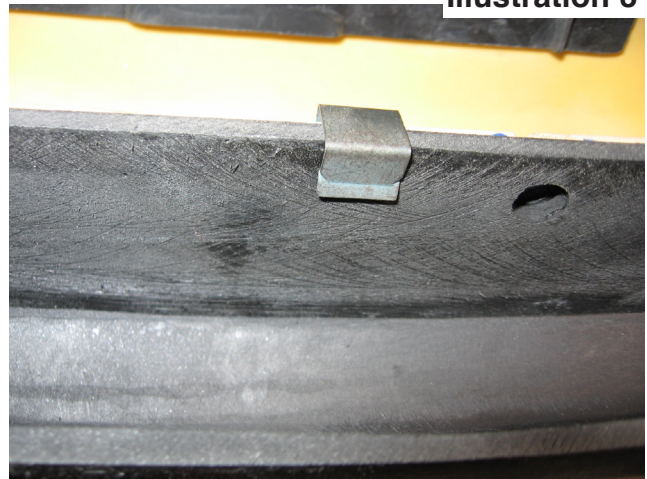
**Illustration 2**



3. Align the edge of the fascia and airdam while using the U-clips (C) to hold it in place. (The U-clips may need to be pinched down with pliers to grip both pieces.) These clips will locate the airdam while you drill holes in the next step.



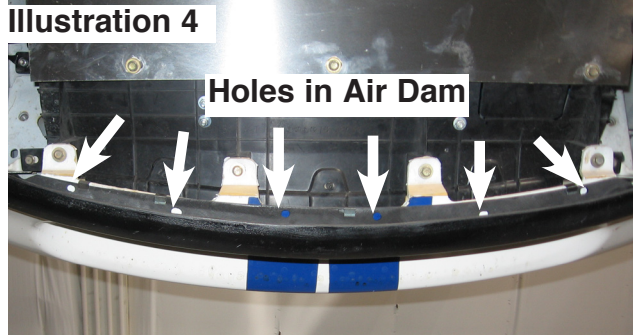
**Illustration 3**



## Front Air Dam Installation Instructions

---

4. With the airdam properly located, drill six 6.5mm or 1/4" holes through the fascia using the holes in the airdam as guides. Then install the nuts (B) and the bolts (A), through these holes, using flat washers as needed.



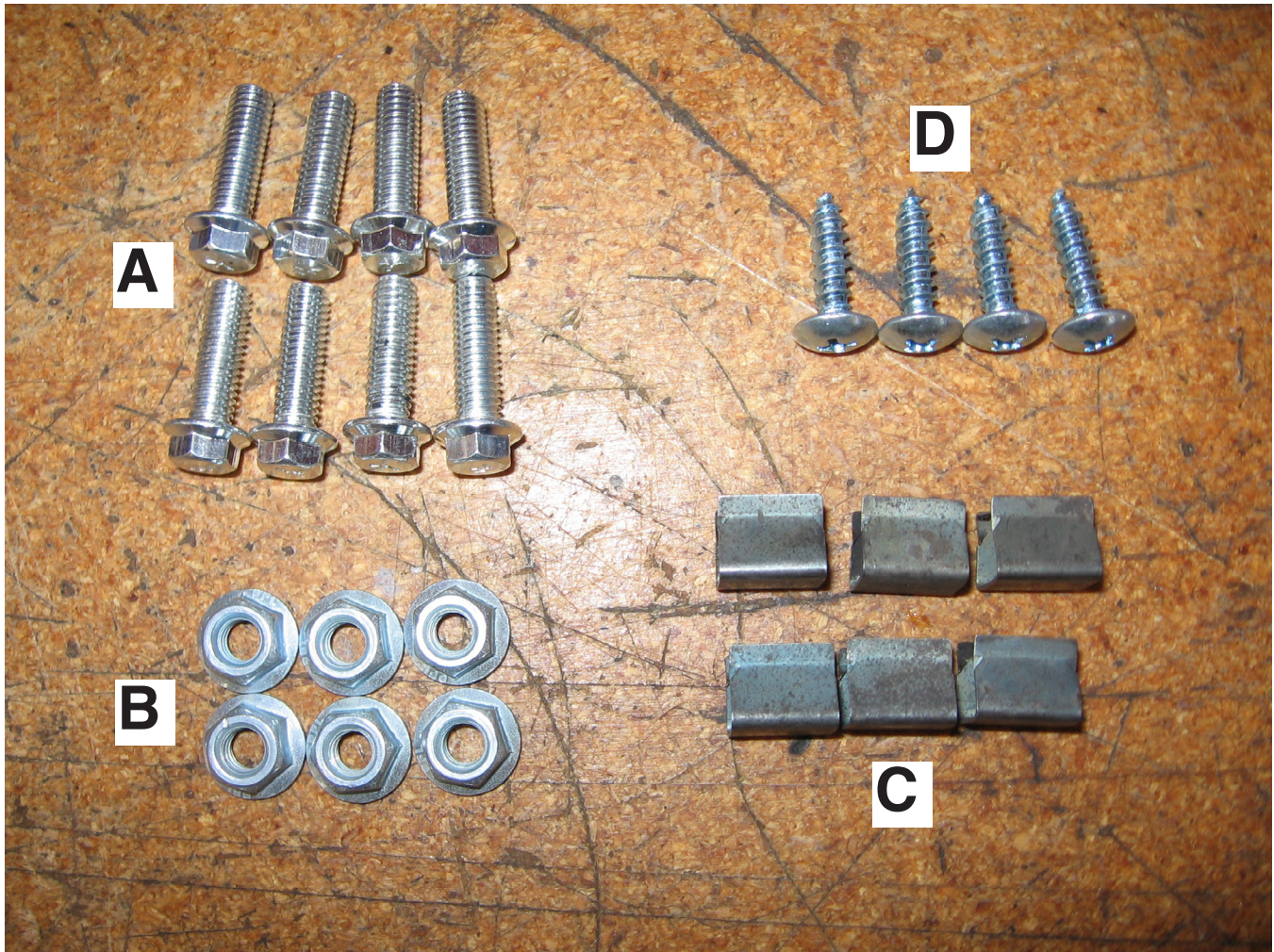
5. Next, align the outboard ends of the airdam with the fascia and install self tapping screws (D), one on each end. Again, use flat washers as necessary.



6. OPTIONAL (Recommended) Locate the two air duct tabs to the underside of the skid plate or belly pan. Use the remaining two self tapping screw (D) to attach the tabs.

## Front Air Dam Installation Instructions

Hardware supplied:



Label	Qty.	Description
A	8	Serrated Flange Bolt, M6 x 1.0 x 20mm
B	6	Serrated Flange nut, M6 x 1.0
C	6	U-clip
D	4	Self tapping screw