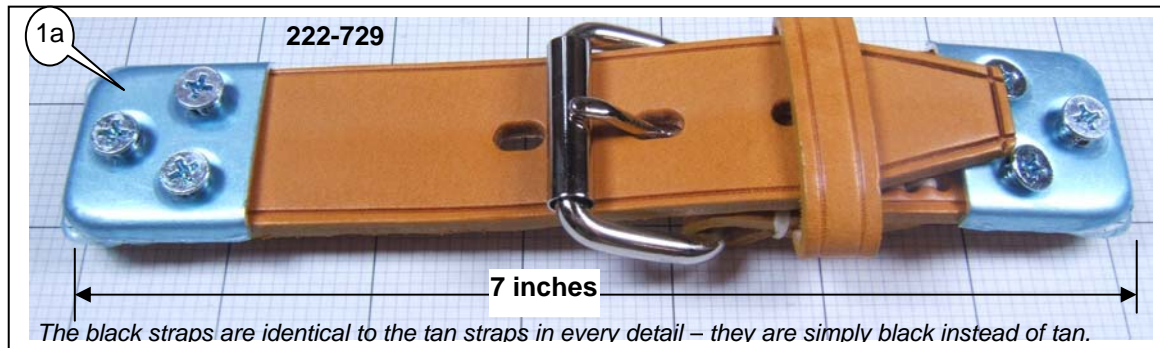


# Supplemental Information & Instructions for Competition Type Leather Hood Straps

Moss US	Moss Europe	Color	Qty
222-601	222-601	Black	One
222-602	222-602	Black	Set of 2

Moss US	Moss Europe	Color	Qty
222-729	222-729	Tan	One
222-728	222-728	Tab	Set of 2

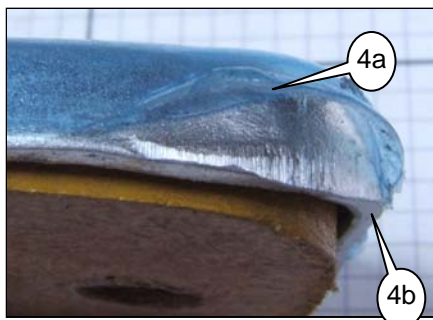
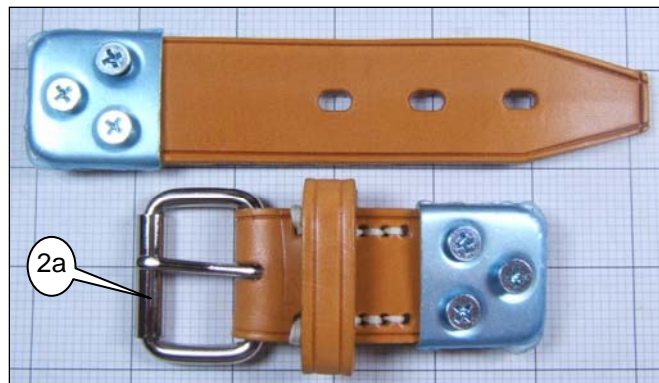
One of the classic features of British racing sports cars from the 1950's and '60's are the leather straps that were used to secure the bonnet (hood). These generally did not replace the conventional hood latch mechanism – they were intended to keep the hood from flying open if the stock latch mechanism failed. BMC generally used tan leather. As is often the case, these racing bits found their way onto many cars that were never used on the track. There were many types of straps, some being long enough to go across the entire hood. We sell a more common version, which is about 7 inches (177.8 mm) long overall once installed. The Minis used one, but often the straps are used in pairs.



The ends of the straps are covered by a stamped stainless steel plate (1a). The heavy duty buckle has a roller under the tongue (2a).

Each plate has three countersunk holes for the flat-head mounting screws, which are supplied with flat washers and Nyloc nuts (3a).

The plates are covered by a blue (4a, as in these photos) or white plastic film to keep them from being scratched.

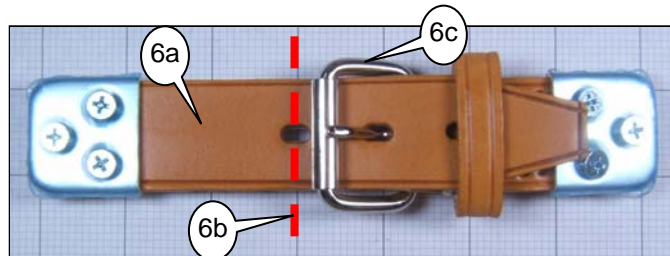
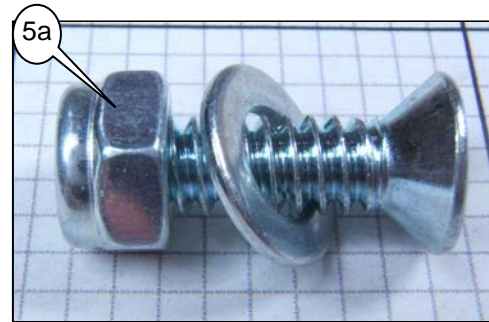


## 49 **Installation Tips**

50 This is an accessory item – there is no “right” place  
51 to install it. There is, however, some logic involved. The  
52 straps will be most effective when mounted as far away from  
53 the hinges as practical.

54 You do need to consider the area underneath as  
55 well- you need clear access to the Nyloc nuts provided with  
56 the straps. The screws provided will extend 3/8” (9.5 mm)  
57 below the bottom surface of the leather strap. This is more  
58 than enough to pass through a single thickness steel panel.  
59 Once you have decided where to mount the straps, cover  
60 the area where the straps will be mounted with tape. The  
61 blue 3M painter’s masking tape works well.

62 Remove the screws and carefully  
63 position the straps on the body so that the  
64 straps are symmetrical side to side. If you  
65 place the strap (6a) on the hood and the  
66 buckle (6c) on the body, you can position the  
67 strap so that the buckle does not overlap the  
68 hood opening. (6b)



69  
70 If you do this, the buckle will never flop over the edge of the hood opening, which would interfere  
71 with closing the hood. The strap (6a) will extend past the edge of the hood, but it is so stiff it will never  
72 interfere with the hood closure. With the straps where you want them, mark the holes for the screws. If  
73 you have one, use an automatic center punch to dimple the sheetmetal where you marked the location of  
74 the holes. Use a sharp drill bit and carefully drill the holes. Use a slightly larger drill bit than absolutely  
75 necessary to give you some adjustment. Check the fit of the straps carefully before you remove the  
76 protective tape. Note that the edge of the plate (4b) may contact the paint when you tighten the screws.  
77 This will permanently dent or otherwise mar the paint. If this is a concern, cut a piece of thin plastic sheet  
78 to go between the body and the leather. You want just enough additional thickness to keep the edge of  
79 the plate off the paint.

80 Leather is a natural material, and like your own skin, prolonged exposure to the sun will dry it out  
81 We suggest Connolly Hide Care (220-210 or GAC2057X).



82  
83  
84  
85  
86  
87  
88  
89  
90  
91  
92  
93 *Although every effort has been made to ensure the accuracy and clarity of this information, any suggestions  
94 that you may have that will improve the information (especially detailed installation notes) are welcome.*

*Please use the simple email form on the “**Contact Us**” page on the Moss website:*

*<http://www.mossmotors.com/AboutMoss/ContactUs.aspx>*

*If you prefer, you may call our Technical Services Department at 805-681-3411. So many people call us for  
help that we are often not able to answer the calls as fast as we’d like, and you may be asked to leave a  
message. We apologize in advance for the inconvenience. We will get back to you within 2 business days.*



### **Moss Motors, Ltd.**

440 Rutherford Street, Goleta, California 93117  
In the US & Canada Toll Free (800) 667-7872 FAX (805) 692-2510 (805) 681-3400

### **Moss Europe Ltd.**

Hampton Farm Industrial Estate, Hampton Road West, Hanworth Middlesex, TW13 6DB  
In the UK: 020-8867-2020 FAX:- 020-8867-2030